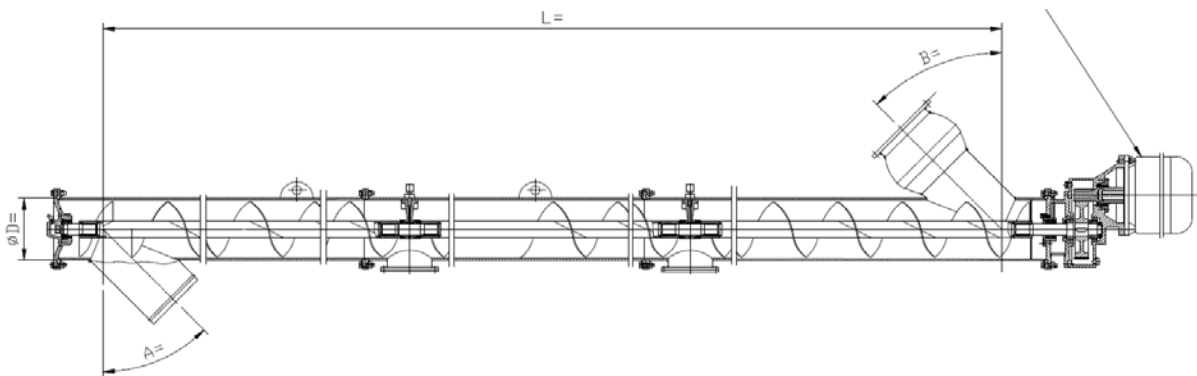


สกรูลำเลียงปูนและอะไหล่

(Cement Screw Conveyor and Accessories)



รุ่น	inside Dia. (mm.)	ความยาว (m.)	shell Dia. (เส้น)(mm.)	working angle (มุม)	Motor power (kw)
168 (6")	φ160	4.5, 6, 9	168	≤ 45°	5.5
219 (8")	φ200	4.5, 6, 9, 12	219	≤ 45°	7.5, 11
273 (10")	φ250	6, 9, 12	273	≤ 45°	11, 15

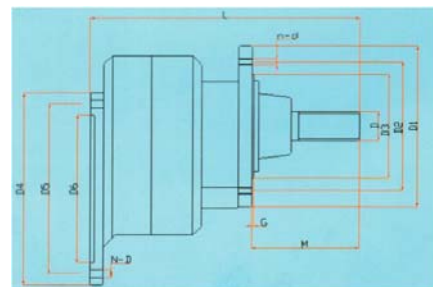
• Gearbox of Screw Conveyor (หัวเกียร์)



SM Series



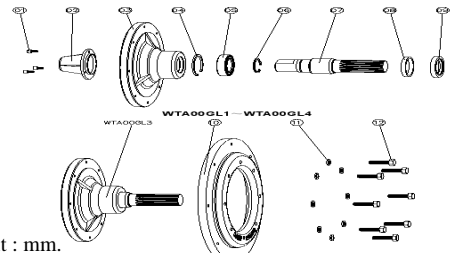
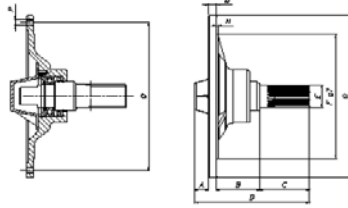
VM Series



Unit : mm.

Type	Motor Power	D	D1	D2	D3	D4	D5	D6	N-D	n-d
VM168	5.5 kW	40	250	220	162	300	265	230	4-M12	8-M10
SM219A	5.5/7.5 kW	40	280	250	210	300	265	230	4-φ13	8-φ13
SM219B	11/15 kW	40	280	250	210	350	300	250	4-φ18	8-φ13
SM273	15/18.5 kW	40	330	305	265	350	300	250	4-φ18	8-φ13

• **End Flange** (หน้าแปลนท้าย)



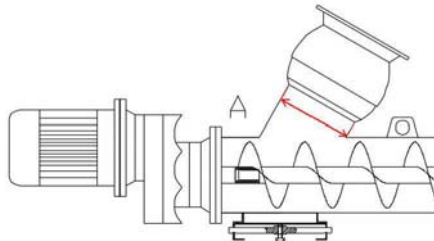
Unit : mm.

Model	A	B	C	D	E	F	G	M	N	P	Q	kg.
WTA00GL1	24	72.5	85	195.5	40x36	162	250	14	2	M10	220	7.0
WTA00GL3	24	72.5	85	195.5	40x36	210	275	14	2	M10	250	7.6
WTA00GL4	24	72.5	85	195.5	40x36	265	330	14	2	M10	305	10.0

• **Universal joint / Adjustable inlet** (ข้อต่อปรับมุม)

Unit : mm.

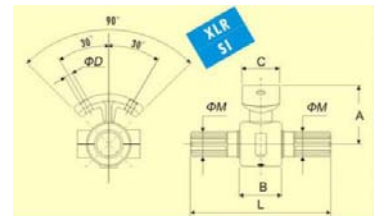
Model	A
168	φ168
219	φ219
273	φ273



• **Hanger Bearing (Aluminum Alloy)** (แบร่ริงแขวน)

Unit : mm.

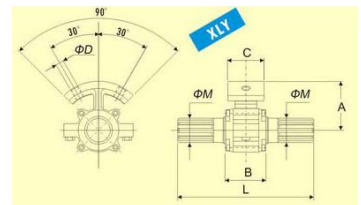
Model	φShaft	φTube	A	B	C	M	L	kg.
SI-168	40	168	80	56	51	40x36	245	2.4
SI-219	40	219	105.5	56	51	40x36	245	2.6
SI-273	40	273	132.5	56	51	40x36	245	2.8



• **Hanger Bearing (Cast iron)** (แบร่ริงแขวน)

Unit : mm.

Model	φShaft	φFeeder	A	B	C	D	M Din5482	L	kg.
HV-168	45	168	80	75	62	M14	40x36	225	4.0
HV-219	45	219	105.5	75	62	M14	40x36	225	4.5
HV-273	45	273	132.5	75	62	M14	40x36	225	4.7



• **Pipe Joint** (ข้อต่อท่อ)

Unit : mm.

Model	Teeth	A	B	C	D	Spring Collar
WA040060	20	40x36	60	92	60	φ37
WA040114	20	40x36	114	140	114	φ37
WA060114	28	60x55	114	140	114	φ55

